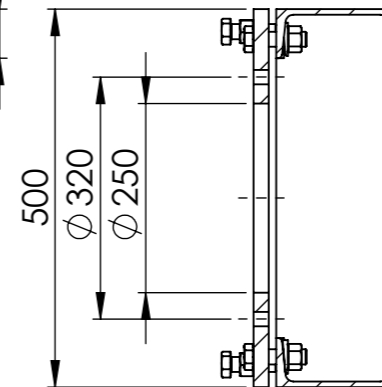
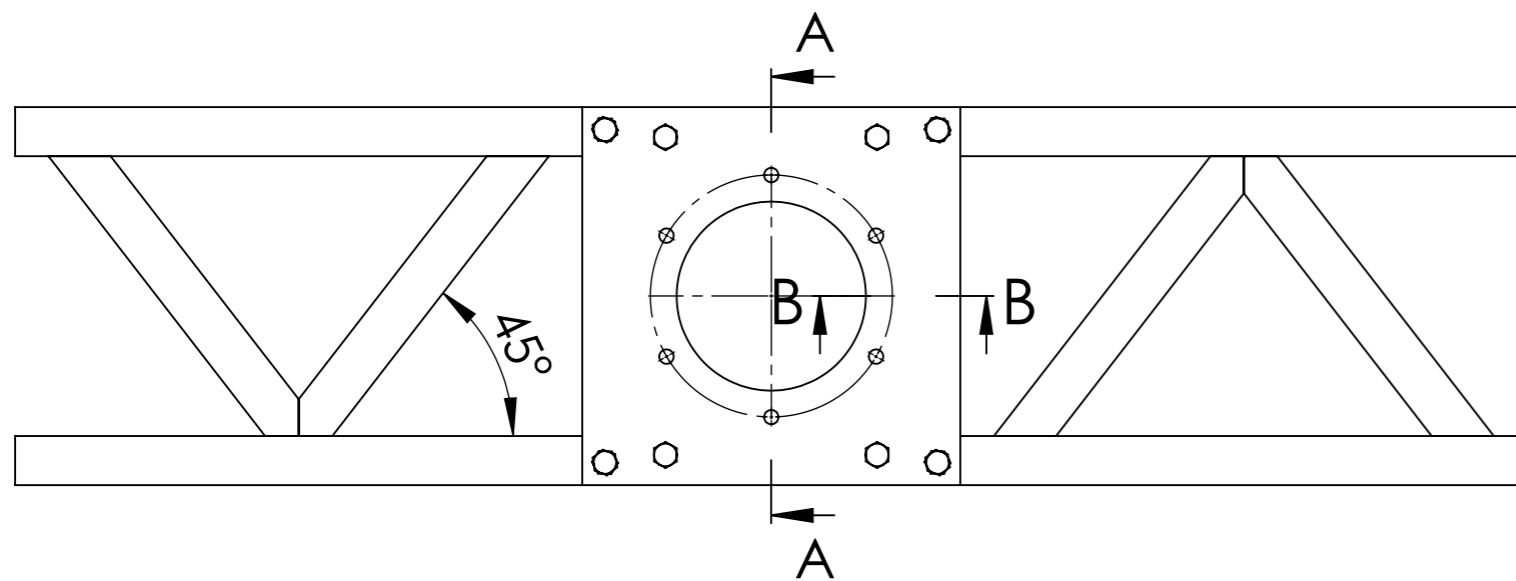
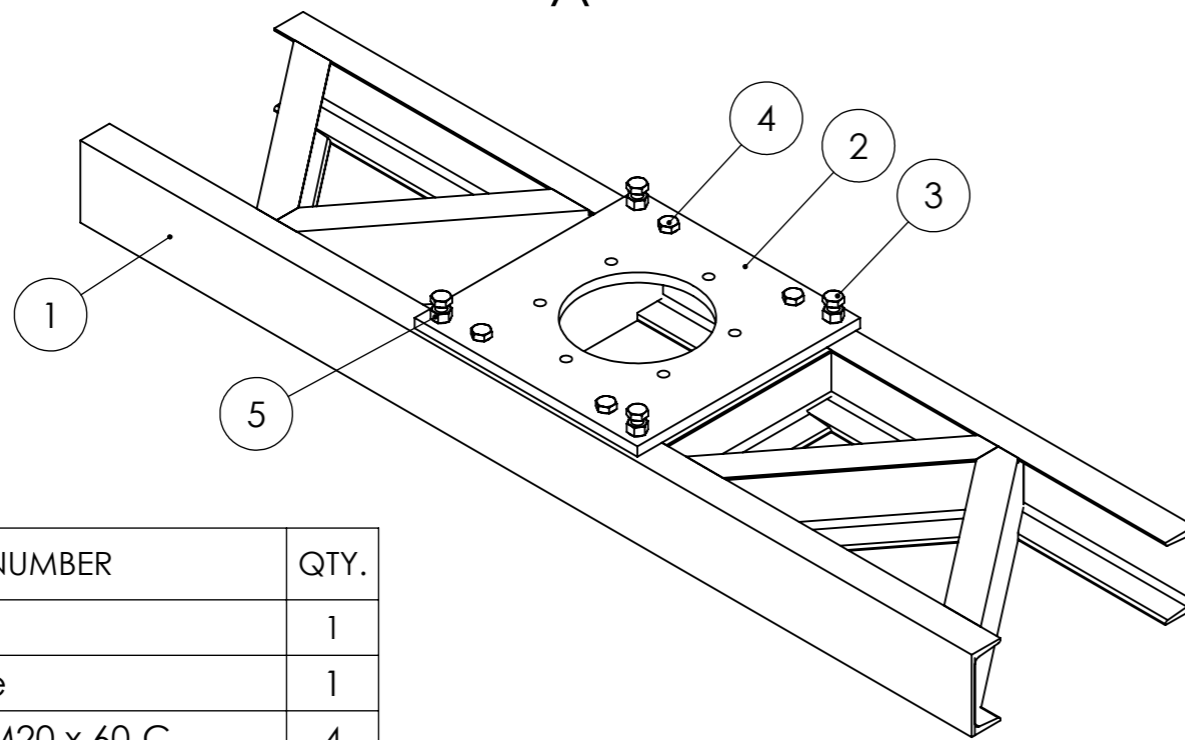
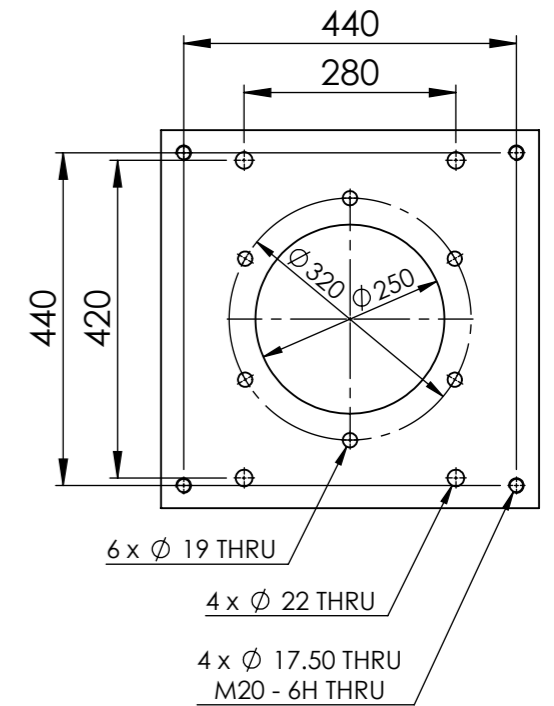


SECTION B-B
SCALE 1 : 7



SECTION A-A
SCALE 1 : 10



ITEM NO.	PART NUMBER	QTY.
1	Chassis	1
2	Mixer Base Plate	1
3	DIN EN 24017 - M20 x 60-C	4
4	DIN EN 24017 - M20 x 70-C	4
5	Hexagon Nut ISO 4032 - M20 - W - N	8
6	DIN 434-22	4

DESIRED C BEAM SIZES FOR OPEN TANKS

TANK DIAMETER /WIDTH (m)	1	1.5	2	2.5	3	4	5	6	7
SUAITABLE BEAM SIZE	120	120	160	180	220	300	300	380	400
BEAM DIMENSION b*h (mm)	55*120	55*120	65*160	70*180	80*220	100*300	100*300	102*380	110*400

Drawing Title: Chassis of MSRM Mixer		Customer: -		Drawing No.: ----		
Weight(kg): -		Quantity: -		Page: A3		

<p>Pakzist Modern Technical & Engineering Co.</p>	Project No.: PROJECT-NO		Project Name: PROJECT-NAME		Sheet: SHEET			
	Date	Name	Signature	Rev.	Description	By		Date
	Designed By
	Drawn By
	Checked By
Approved By		